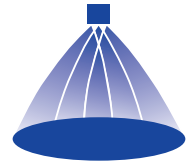


Cluster head nozzles

Series 502/503

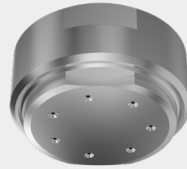


Features:

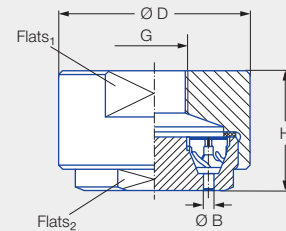
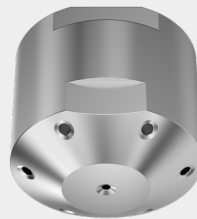
- Fine, uniform atomization
- Stable spray angle
- Space-saving installation
- Maintenance-friendly design
- High temperature and chemical resistance

Applications:

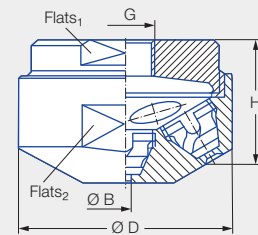
- Chlorine precipitation
- Absorption
- Dust suppression
- Degassing of liquids
- Desuperheating



Series 502/503



70° version



130° version

70° version

| G | Dimensions [mm] | | | | Weight [g] (brass) |
|----------|-----------------|------|--------------------|--------------------|--------------------|
| | H | Ø D | Flats ₁ | Flats ₂ | |
| 1/2 BSPP | 25.0 | 50.0 | 46 | 38 | 250.0 |
| 3/4 BSPP | 46.0 | 75.0 | 65 | 55 | 870.0 |

130° version

| G | Dimensions [mm] | | | | Weight [g] (brass) |
|----------|-----------------|------|--------------------|--------------------|--------------------|
| | H | Ø D | Flats ₁ | Flats ₂ | |
| 1/2 BSPP | 28.0 | 40.0 | 27 | 36 | 150.0 |
| 3/4 BSPP | 53.0 | 60.0 | 50 | 55 | 410.0 |

| Spray angle | Ordering no. | | | BSPP | Bore diameter B [mm] | Narrowest free cross sections Ø [mm] | V̇ water [l/min] | | | | | Spray diameter D [mm] (at p = 2 bar) | |
|-------------|--------------|-----------------|----|------|----------------------|--------------------------------------|------------------|-------|-------|-------|--------|--------------------------------------|----------------|
| | Type | Mat. no. | | | | | p [bar] | | | | | H = 500 [mm] | H = 1,000 [mm] |
| | | 17 ¹ | 30 | | | | 0.5 | 1.0 | 2.0 | 5.0 | 10.0 | | |
| 70° | 502.445 | | ● | 1/2 | 0.90 | 0.50 | – | – | 1.25 | 1.98 | 2.80 | 270 | 360 |
| | 502.985 | ● | | 3/4 | 3.30 | 2.00 | 14.00 | 19.80 | 28.00 | 44.27 | 62.61 | 610 | 1,000 |
| | 503.065 | ● | | 3/4 | 4.90 | 2.00 | 22.50 | 31.82 | 45.00 | 71.15 | 100.62 | 920 | 1,520 |
| 130° | 502.448 | ● | ● | 1/2 | 0.90 | 0.50 | – | – | 1.25 | 1.98 | 2.80 | 310 | 370 |
| | 502.548 | ● | ● | 1/2 | 1.80 | 0.50 | – | 1.58 | 2.24 | 3.54 | 5.01 | 450 | 570 |
| | 502.748 | ● | ● | 3/4 | 1.90 | 1.90 | 3.55 | 5.02 | 7.10 | 11.23 | 15.88 | 1,110 | 1,400 |
| | 502.838 | ● | ● | 3/4 | 2.90 | 2.00 | 5.90 | 8.34 | 11.80 | 18.66 | 26.39 | 1,500 | 2,060 |
| | 502.908 | ● | ● | 3/4 | 4.00 | 2.00 | 9.00 | 12.73 | 18.00 | 28.46 | 40.25 | 1,770 | 2,650 |
| | 503.028 | ● | ● | 3/4 | 4.20 | 2.00 | 17.75 | 25.10 | 35.50 | 56.13 | 79.38 | 2,050 | 3,150 |
| | 503.118 | ● | ● | 3/4 | 6.50 | 2.00 | 30.00 | 42.43 | 60.00 | 94.87 | 134.16 | 2,300 | 3,550 |

¹ We reserve the right to supply material 316Ti or 316L under material no. 17.

Conversion formula for this series: $\dot{V}_2 = \dot{V}_1 \cdot \sqrt{\frac{p_2}{p_1}}$

Ordering Type + Material no. = Ordering no.
 example: 502.445 + 30 = 502.445.30

Assembly accessories can be found in Chapter 9 "Accessories".